

GENERAL INFORMATION

Before product selection, we recommend reading the following technical sheet:

[IG 01 - GENERAL INFORMATION LISTONE GIORDANO](#)




LISTONE GIORDANO® NATURAL GENIUS BISCUIT | Design Patricia Urquiola

High-end two-layers engineered hardwood floor with a top layer and crossed-fibres birch plywood support.

Listone Giordano® Natural Genius Biscuit offers a rounded cut that softens the shape featuring a new and fascinating contemporary spirit to this wood floor that reinterprets the classic elegance of herringbone design.

The slightly convex outline complements the design emphasizing the material sensations and the tactile experience of the wood.

SPECIFICATIONS

CROSS SECTION	12,5		3 / 3,5
TOTAL THICKNESS	12,5 mm		
TOP LAYER THICKNESS	3 / 3,5 mm of Oak		
SUPPORT	multilayer birch plywood		
WEIGHT	9,4 Kg/m ²		
INSTALLATION SYSTEM	glued		
PROFILE	interlocking tongue and groove on all the sides bevelled on all the edges; the bevel has variable dimensions in the curved areas of the boards according to the convex section		
TOP-SUPPORT LAYER GLUING	conforms to the requirements of the <i>class D4 of the UNI EN 204 regulation</i> conforms to the requirements of the <i>JAS type II norm</i> (cycle made of 2 h in hot water at 70°C and then immediately 3 h in an airy stove at 60°C)		

To verify the availability of the various versions of Listone Giordano® products, consult the current Price list.

All the products of the collection Listone Giordano® Natural Genius Biscuit comply with the requirements of the European Norm UNI EN 13489:2018 "Wood-flooring and parquet - Multi-layer parquet elements".

Waste due to elements' perimetric cutting is calculated between 10% and 20% though percentage may slightly vary according to dimension and shape of the surface area to be laid.

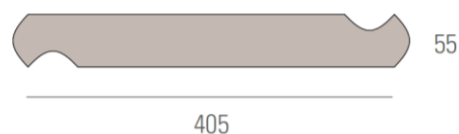
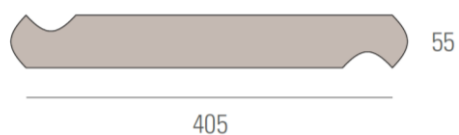
Our technical department is available, on the basis of CAD drawings provided by the client, to elaborate the floor plan drawings and detailed list of the number of modules required for flooring installation.

WOOD SPECIES

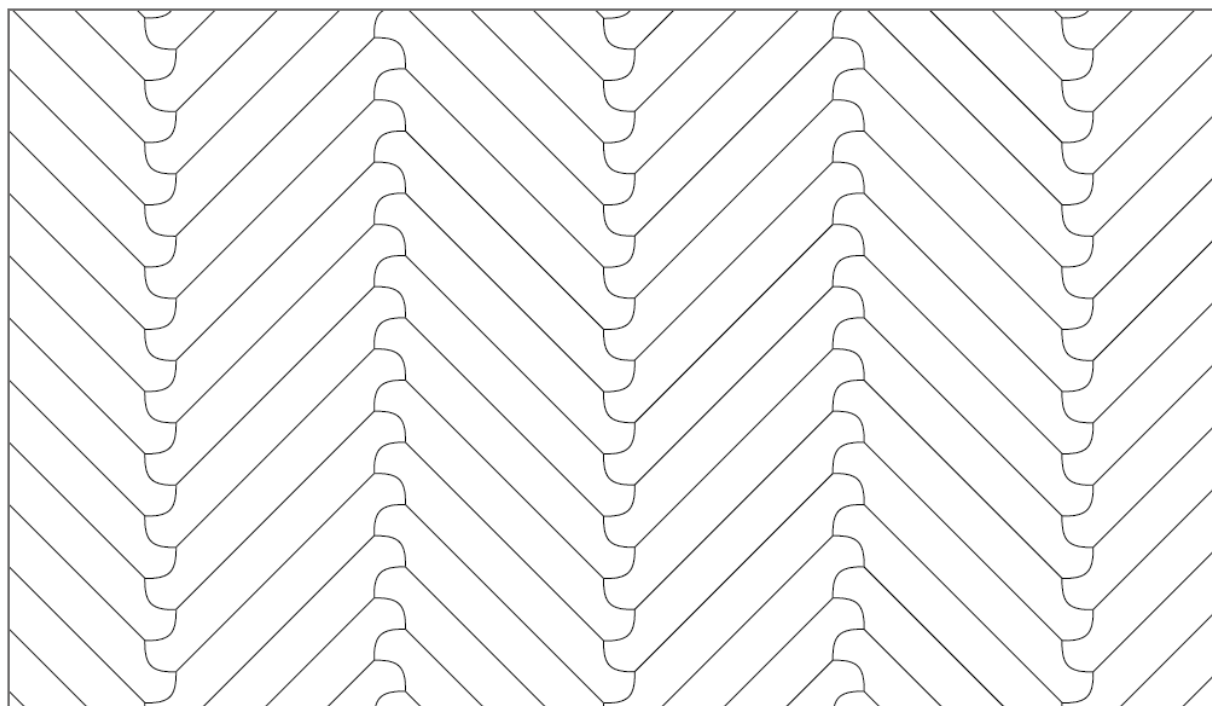
WOOD SPECIES	NATURAL VEGETATION AREA	HARDNESS
Oak	European forests	High

Listone Giordano® Natural Genius Biscuit is available in 5 different versions:

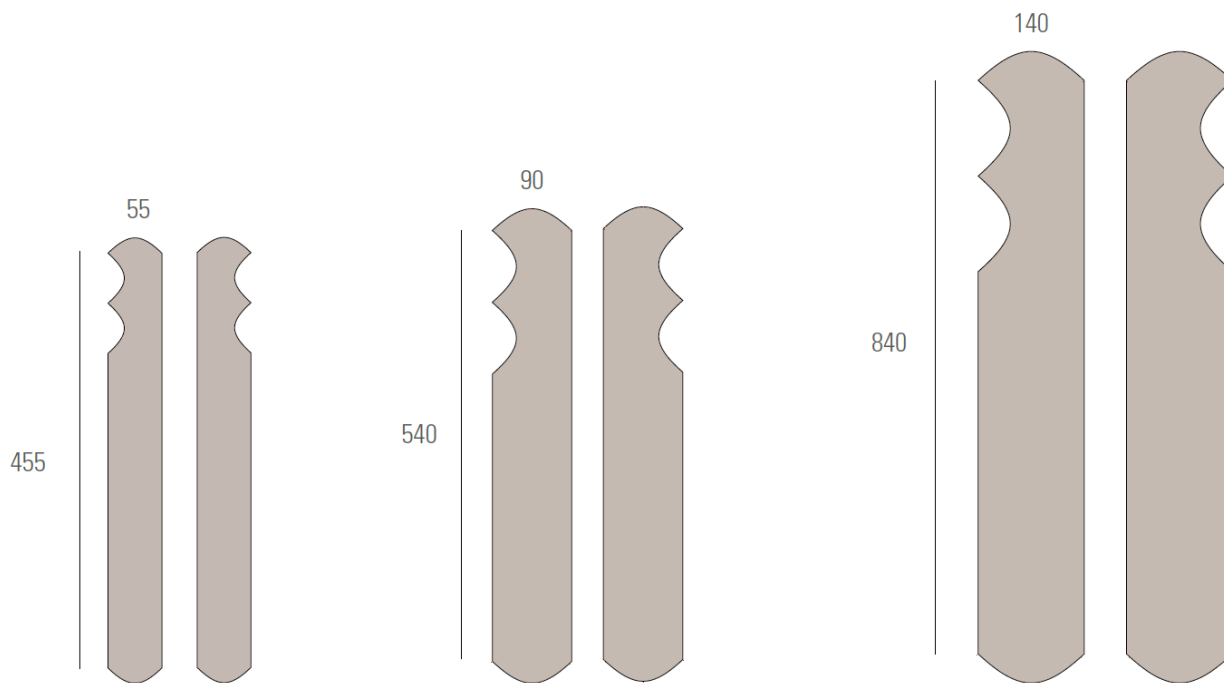
BISCUIT N°1



INSTALLATION PATTERN BISCUIT N°1

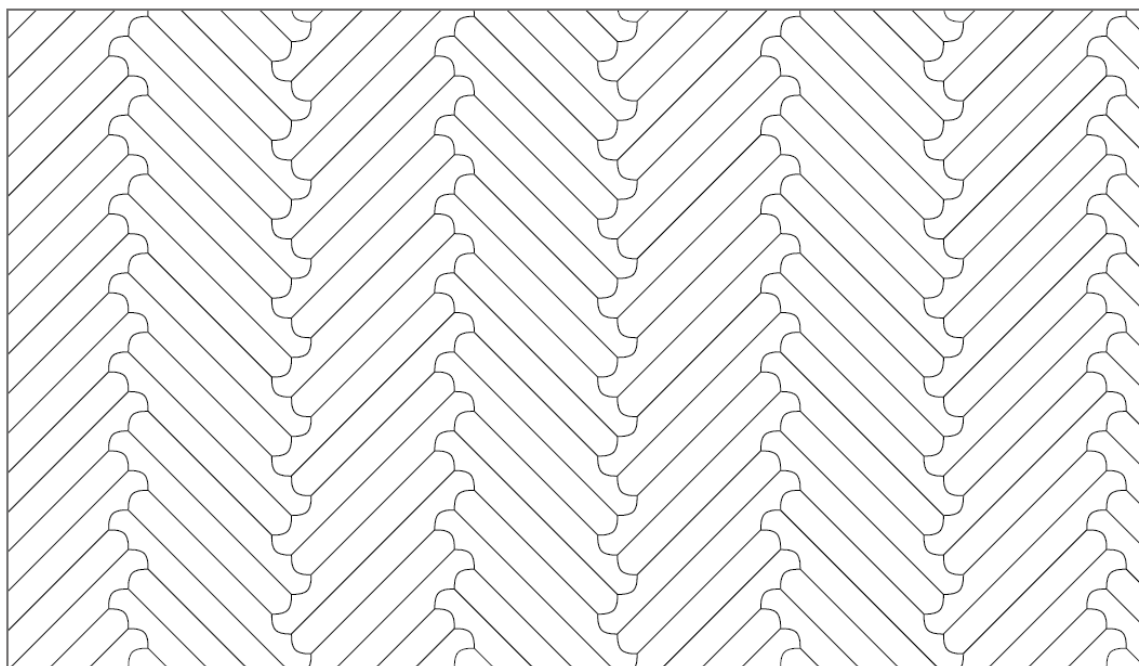


BISCUIT N°2

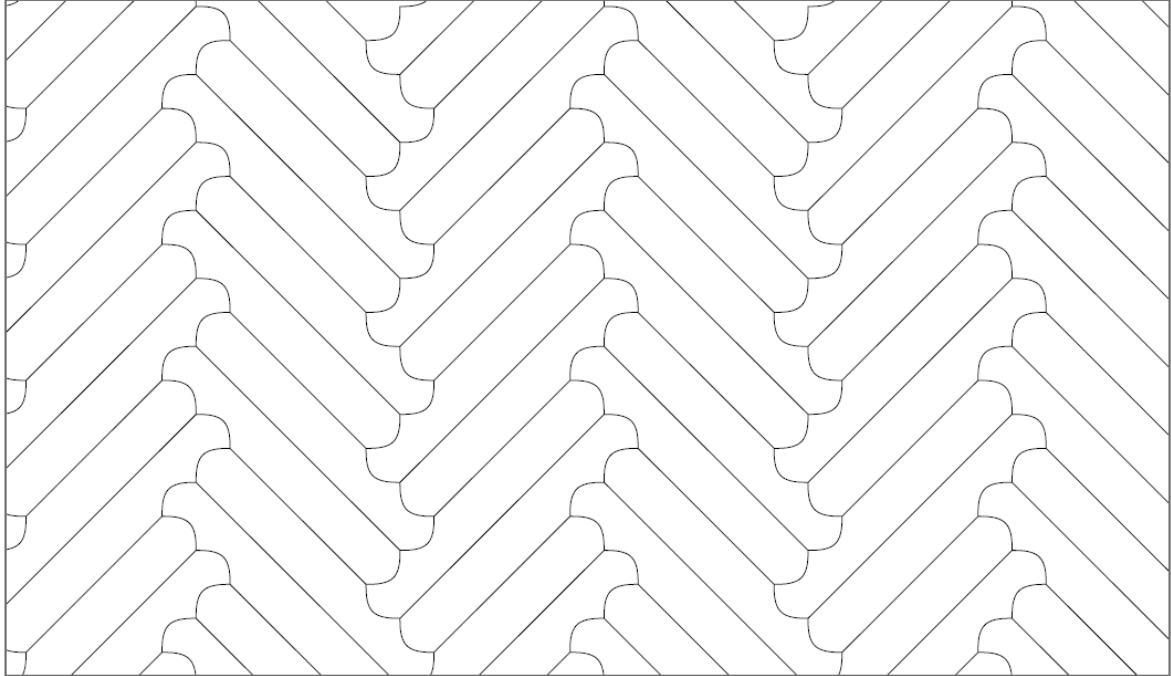


INSTALLATION PATTERNS BISCUIT N°2

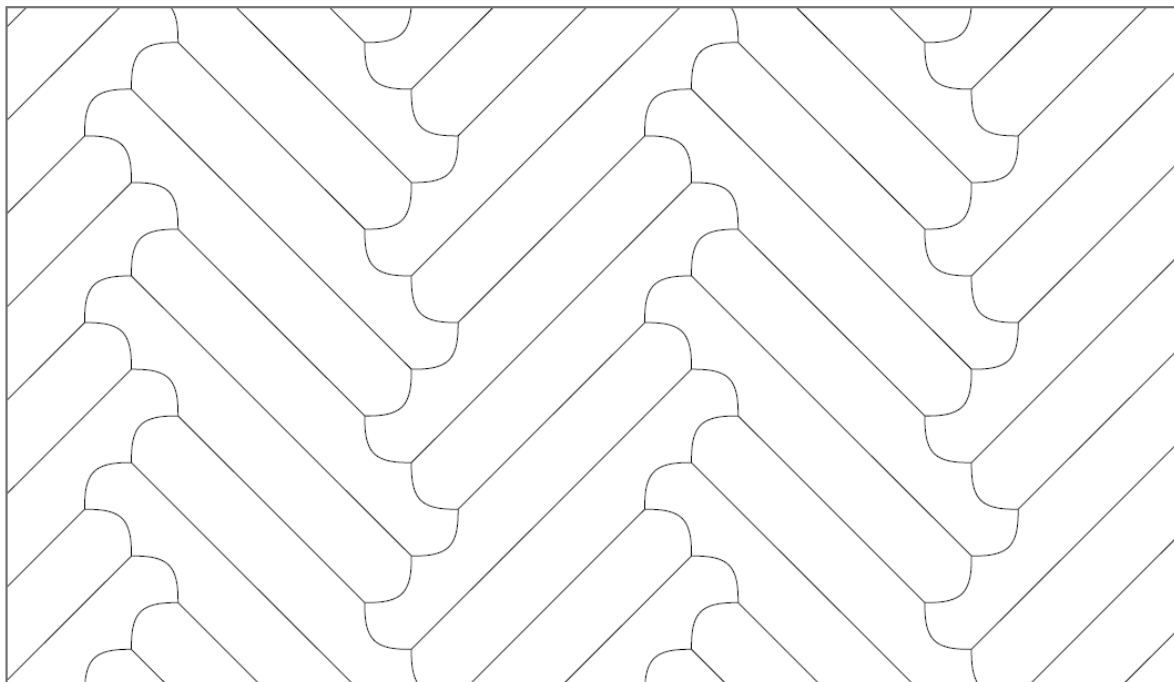
WIDTH 55



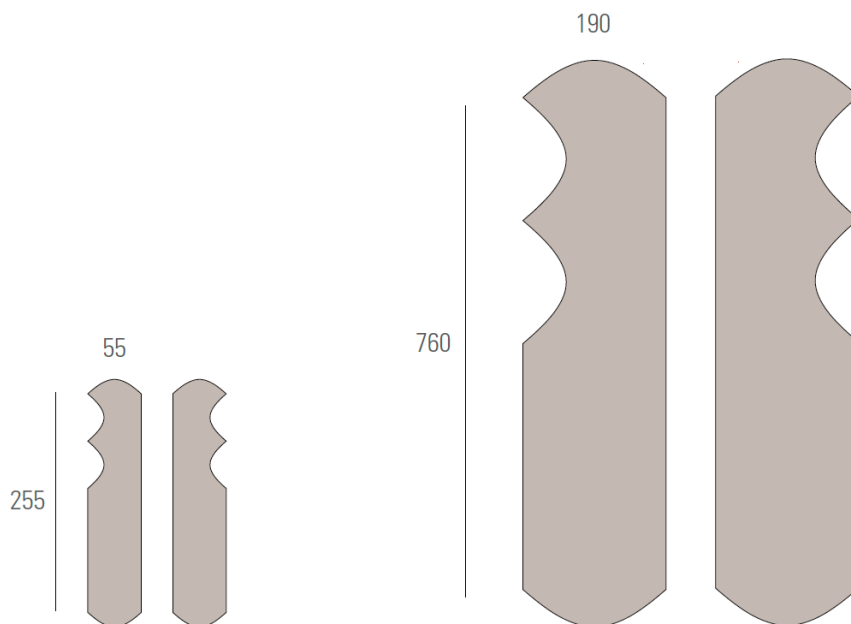
WIDTH 90



WIDTH 140

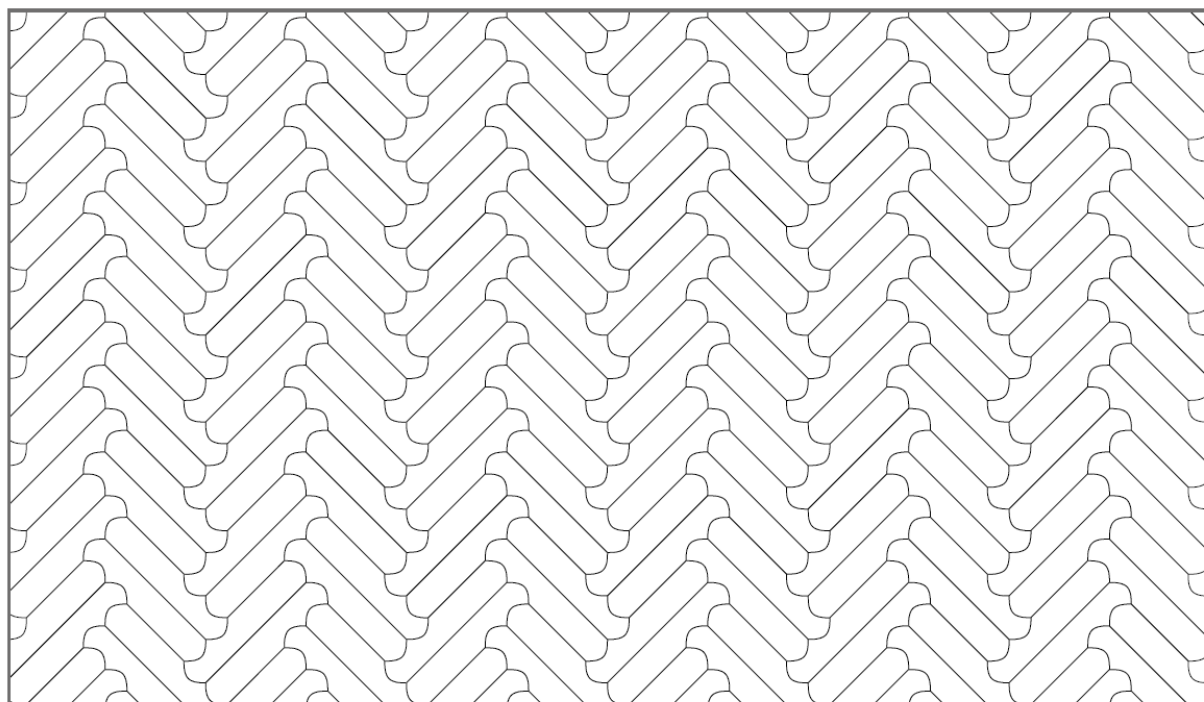


BISCUIT N°3

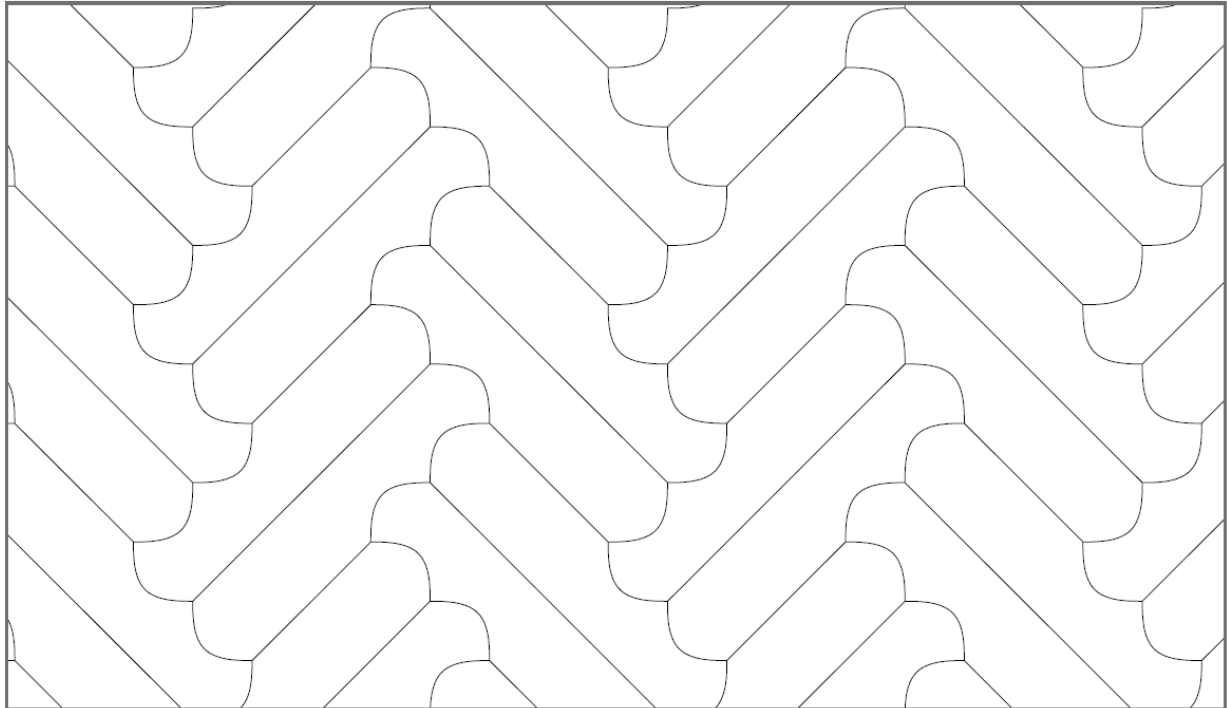


INSTALLATION PATTERNS BISCUIT N°3

WIDTH 55

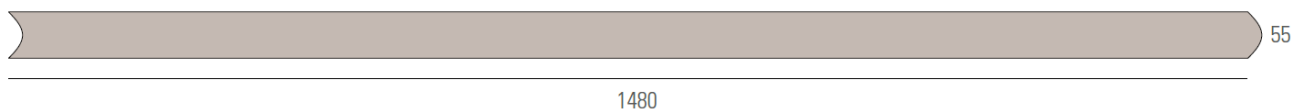


WIDTH 190

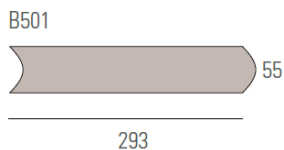


BISCUIT N°5 SMALL

STANDARD ELEMENT



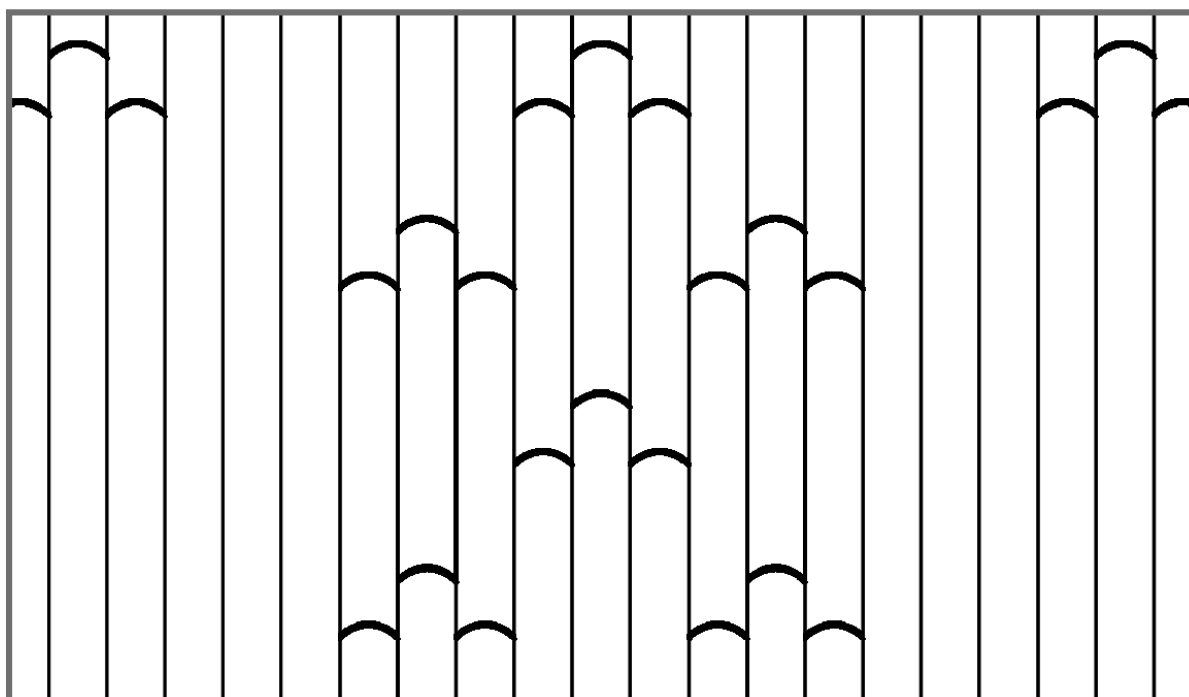
DECORATIVE ELEMENT



COLOUR INSERTS

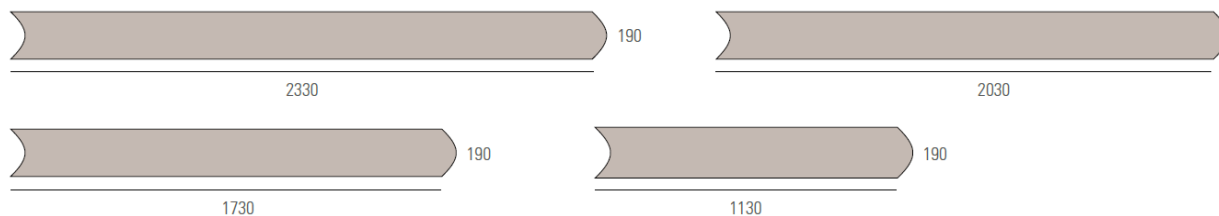


INSTALLATION PATTERN BISCUIT N°5 SMALL

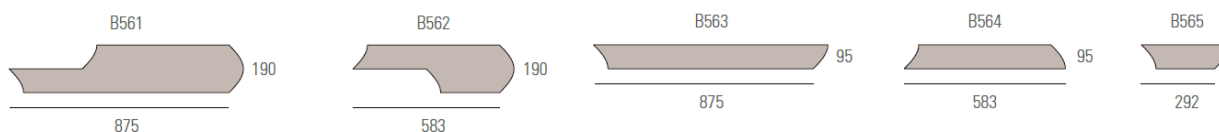


BISCUIT N°5 LARGE

STANDARD ELEMENTS



DECORATIVE ELEMENTS

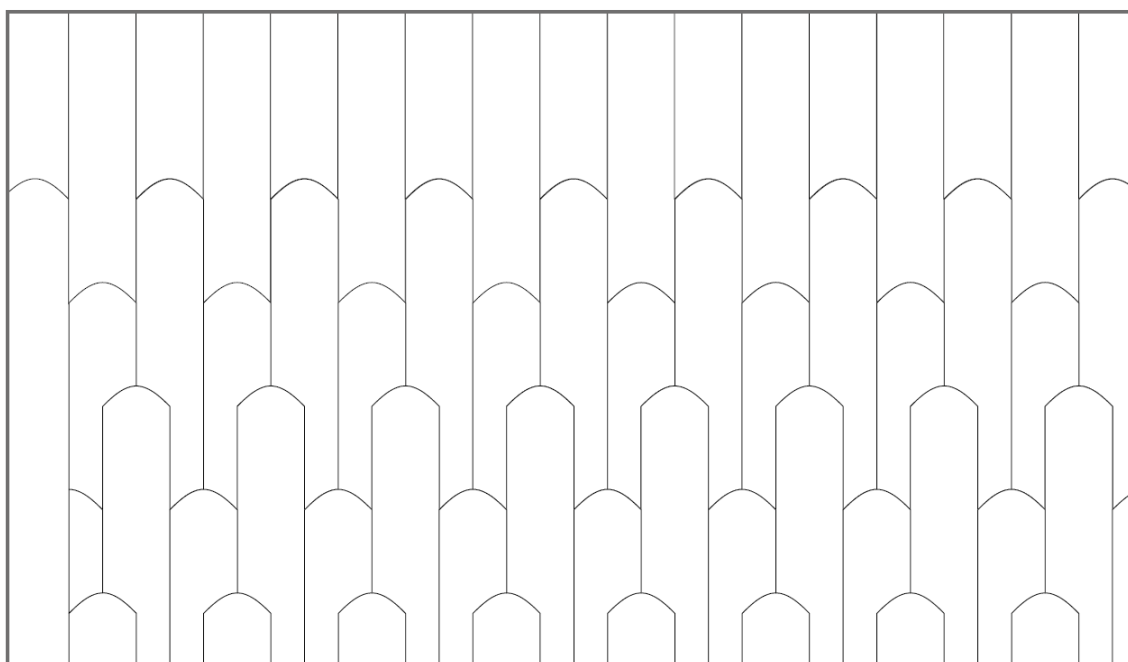


COLOUR INSERTS



The modules called "decorative elements" are staggered in width by half a board compared to the "base" modules. Since all modules have a convex surface, where the centre line of a module (maximum thickness of the convex profile) meets with the side of the other element halved in width (minimum thickness of the convex profile), it creates a difference in level which is a characteristic of the material and it is not due to any kind of defect or deformation.

INSTALLATION PATTERN BISCUIT N°5 LARGE



GRADES

Listone Giordano® Natural Genius Biscuit products are available in the following grade:

- Elegant (Fibramix)

To know the necessary information about grades see the appropriate sheet:

[**GC 01 - GRADES LISTONE GIORDANO**](#)



FINISHES AND SURFACE PROCESSING

Listone Giordano® Natural Genius Biscuit products are available with the following finishes:

- Invisible Touch
- Oleonature

To know the necessary information about finishes and surface processing see the appropriate sheet:

[**FP 01 - FINISHES AND SURFACE PROCESSING LISTONE GIORDANO**](#)



INSTRUCTIONS FOR INSTALLATION

The installation of the Listone Giordano® Natural Genius Biscuit products can only be glued down.

To know the necessary information about laying see the appropriate sheet:

[**DL 01 - INSTRUCTIONS FOR INSTALLATION LISTONE GIORDANO**](#)



CLEANING, USE AND MAINTENANCE

The Listone Giordano® Natural Genius Biscuit product finishes need specific cleaning and maintenance, in accordance with appropriate instructions to be taken into account.

To know the necessary information about cleaning, use and maintenance see the appropriate sheet:

[**CM 01 - CLEANING, USE AND MAINTENANCE LISTONE GIORDANO**](#)



CERTIFICATIONS



BIOSPHERA

Biosphera is a marking system based upon Listone Giordano®'s green procurement policy to provide consumers with brief, clear and useful information on the origin of raw materials. Many products of the collection Listone Giordano® offer both in their top layer and in their support the *Biosphera certified* mark that identifies raw materials whose forestry management is certified according to recognized standards at the international level (FSC®, PEFC, SFI, OLB, LEI, etc.) or the *Biosphera controlled* mark that identifies raw materials whose legal sourcing and forestry management, although not yet certified, is backed up by specific audit and related papers.



FSC®

FSC® is dedicated to the promotion of responsible forest management worldwide. Ask for FSC® certified products.



PEFC

Chain-of-Custody Certification, which guarantees that products are sourced from sustainably, managed forests.



CE MARK

All the products of the collection Listone Giordano® strictly comply to all CE rules regarding hardwood floors.



TOY CERTIFICATION

All the Listone Giordano® finishes are approved according to standard EN71-3 which assures fitness for use in children's toys.



AIR EMISSIONS

French certification of Emissions of Volatile Organic Compounds. All Listone Giordano® products tested according to n°2011-321 French Decree have attained A+ rating, the highest among those in the Decree.



FORMALDEHYDE

All the products of the collection Listone Giordano® comply to the class E1, which is amongst the strictest European regulations (UNI EN 14342).

US TSCA

CARB2 / TSCA TITLE VI CERTIFICATION

All plywood panels used for the manufacturing of Listone Giordano® floors meet the requirements established by US TSCA Phase 2 standards for Formaldehyde emissions with limits lower than the most restrictive European class, that's to say the E1.



F-4 STARS

Listone Giordano® wood floors comply to the most restrictive class F**** classification system on formaldehyde emissions defined by the Japanese Ministry of Land, Infrastructure, Transport and Tourism (MLIT).



ANTI-BACTERIAL FINISH CRYSTALCARE

All the XPlus2, NaturPlus2, NaturPlus2 Matt, MattPlus, Invisible Touch and Oleonature finishes are antibacterial certified by CATAS S.p.a. laboratories according to ISO 22196:2007 regulation.



TÜV PROFICERT - PRODUCT INTERIOR

It certifies that all the Listone Giordano® 2-layer wood floors are complaint with the most stringent health and quality criteria selected by TÜV HESSEN (PREMIUM level).

It's a voluntary certification specifically developed for construction products for interiors.



ISO 9001

Quality Management System certification.

ISO 14001

Environmental Management System certification for the Miralduolo di Torgiano (PG) factory.



ISO 45001

Certification of Occupational Health and Safety Management System.

MADE IN

All the products of the collection Listone Giordano® are Made in Italy.



FIRE REACTION CERTIFICATION

In the following table, you can find fire reaction classes of the various products:

PRODUCT	FINISH	FIRE REACTION CLASS (according to the requirements of the EN14342 regulation on the CE mark)
Listone Giordano® Natural Genius Biscuit	Oleonature	Dfl-s1
	Invisible Touch	Dfl-s1

Cfl-s1 class for glued down installation is valid in case of gluing on non-combustible substrate; it is also valid in case of gluing, using Ecolfit® Listone Giordano®, on underlay 4 mm thick composed of fibres and granules of SBR compacted by a polyurethane adhesive (mass per area unit 2,9 ± 0,2 kg/m²) in a hot process, itself glued on non-combustible substrate using Ecolfit® Listone Giordano®.